



# UCA Radio Division Update

“What have we done for you lately”



# Another year under the belt...

## Radio Projects

- ▶ Microwave upgrade statewide
- ▶ Statewide IP conversion to ready for p25 transport
- ▶ Fiber upgrade for UCA Core
- ▶ Network Wide Alarm System Upgrade
- ▶ Site Remediation





# Microwave Upgrade Project

- ▶ Core Connectivity
- ▶ State Office Building Demolition
- ▶ Sites Needing Additional Bandwidth





# Statewide IP conversion to ready for p25 transport

- ▶ Install Site Routers at Each Site and Core Location
- ▶ Create a Statewide IP Plan, Future Proof For Expansion
- ▶ MPLS Routing vs. Legacy TDM Ring Topology





# Fiber Upgrade for UCA Cores

Redundant Ring Configuration

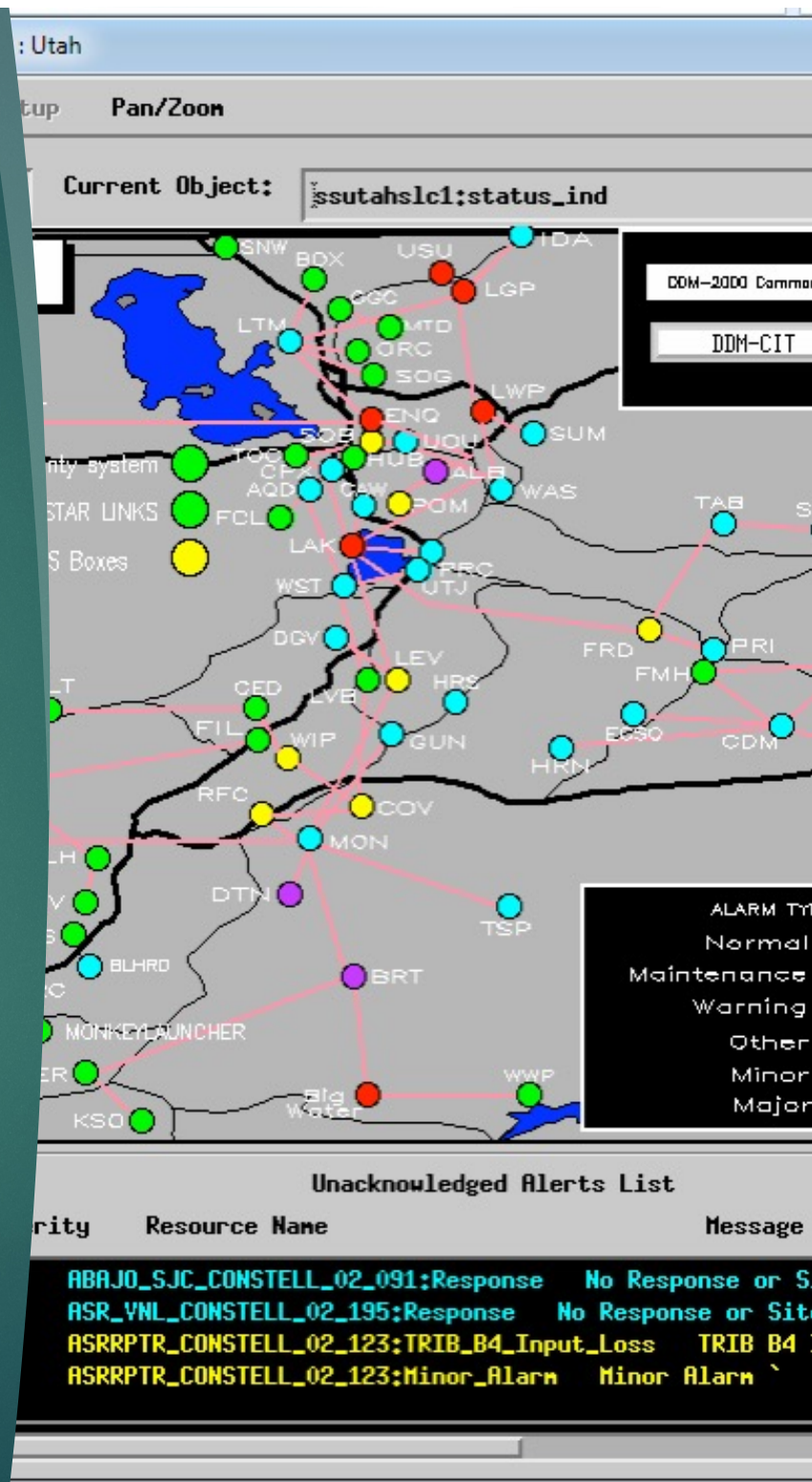
Scalable for Future Expansion





# Network Wide Alarm System Upgrade

- ▶ Combines Two Disparate Systems
- ▶ Allows for Legacy Equipment and New IP Equipment
- ▶ Easier Access for Technicians of Entire State View







# 2021 Site Remediation

What Does  
“Site  
Remediation”  
Mean?











When you think you are making progress.....





# UCA - Finding Ways To Increase Efficiency








Keeping  
the lights  
on







# Page on-call technician



UTAH COMMUNICATIONS AUTHORITY

[ADMIN](#) [PROGRAMMING](#) [P25](#) [INTEROP](#) [911](#) [RADIO](#)

[Home](#) [About](#) [News & Resources](#) [Advisory Committee Documents](#) [Contact Us](#) [Emergency/Outage Click Here](#)

## PAGE ON-CALL TECHNICIAN

If you are a member of the public experiencing an emergency, please call 911. If you are a user of UCA's Radio System and are experiencing an emergency radio outage or problem, please call 801-840-4216. Thank you for your consideration.

### CONTACT US

© 2020 Utah Communications Authority  
5215 Wiley Post Way #550  
Salt Lake City, Utah 84116  
Office: 801.840.4200  
(8:00am - 5:00pm Mon - Fri)

[Request Support](#)

### DIVISIONS

- Radio
- 911
- Interoperability
- P25
- Radio Programming
- Administrative Services

### STAY IN TOUCH

[Subscribe](#)

Copyright © 2020 | Web Design by [i4 Solutions](#)



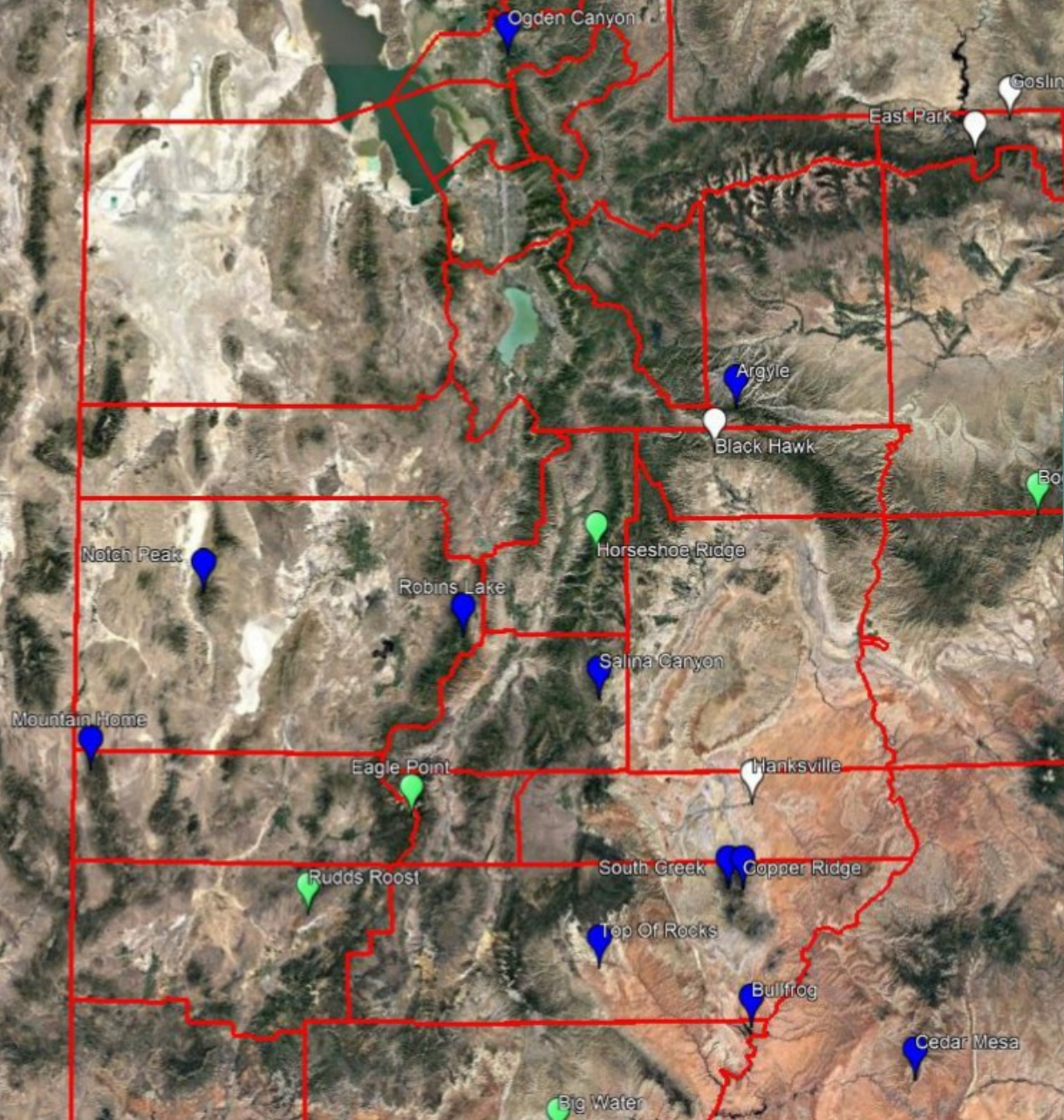
# Site Builds in Progress 2021



- ▶ Beaver Canyon (Eagle Point Ski resort) - Beaver
- ▶ Castle Gate - Carbon
- ▶ Hanksville – Wayne
- ▶ East Park – Daggett / Uintah



# Sites in Progress 2021



An aerial photograph of a mountainous region, likely in the western United States, with red lines delineating county boundaries. The map features several labeled locations, each marked with a colored pin. Blue pins indicate sites in progress, while green pins indicate other locations. White pins mark specific towns or landmarks. The terrain is rugged with numerous peaks, valleys, and some water bodies like lakes and reservoirs.

Locations marked with blue pins (Sites in Progress):

- Ogden Canyon
- Argyle
- Black Hawk
- Notch Peak
- Robins Lake
- Salina Canyon
- Mountain Home
- Eagle Point
- South Creek
- Top Of Rocks
- Bullfrog
- Cedar Mesa

Locations marked with green pins:

- Horseshoe Ridge
- Rudds Roost
- Big Water

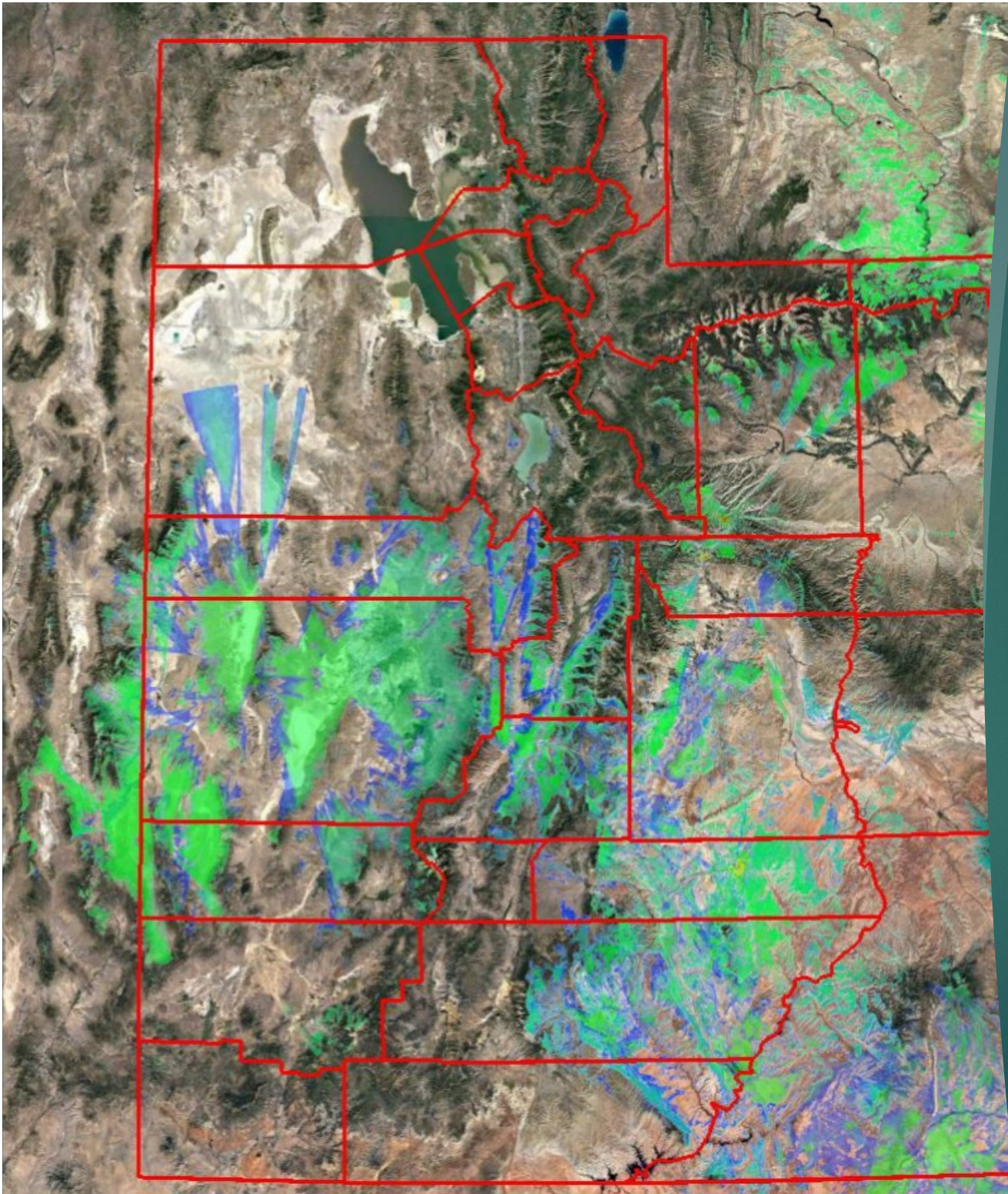
Locations marked with white pins:

- Goslin
- East Park
- Hanksville
- Copper Ridge

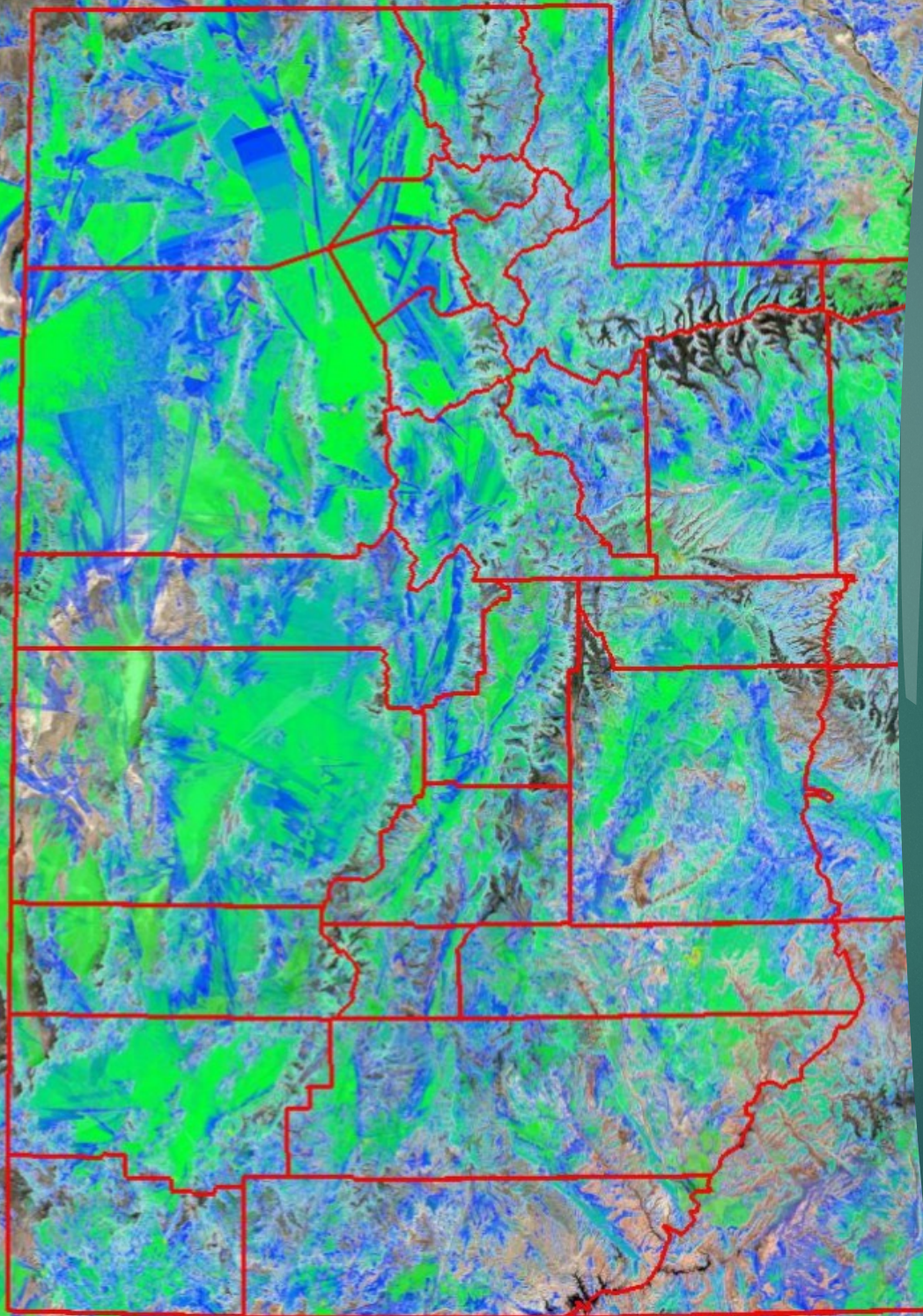




# Proposed Coverage







Completed  
Coverage



# House Cleaning

- ▶ Preparation for P25 Gateway Interface



- ▶ Look at Dispatch resources for unused tiles
- ▶ Look at VHF resources for unused tiles
- ▶ Look at Backup folders for unused tiles



A silver SUV is shown from the side, driving through a deep, muddy rut in a desert trail. The vehicle is splashing mud, and the background shows a dry, hilly landscape with sparse vegetation. The image is part of a presentation slide with a dark teal background and a red vertical bar on the right.

## Brad Morris

- ▶ [bmorris@uca911.org](mailto:bmorris@uca911.org)
- ▶ 801-840-4209 Office
- ▶ 801-946-6346 Cell